

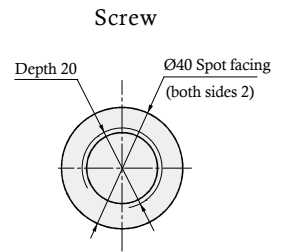
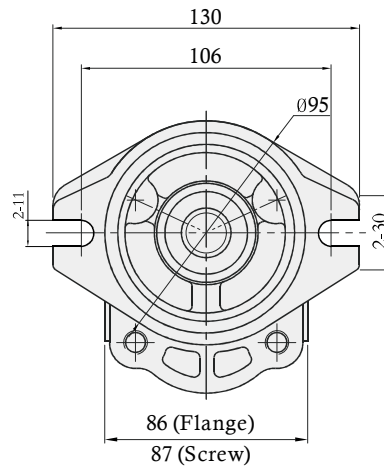
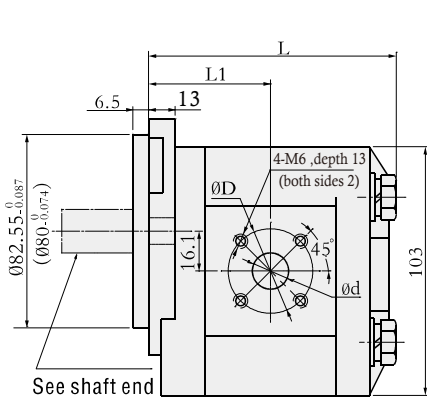


Model coding

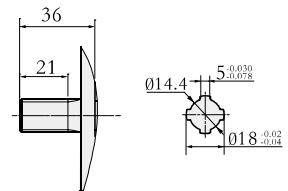


1. **Product code**
2. **Pressure grade** F : 21MPa
3. **Product series** 3
4. **Nominal displacement** (mL/r)
5. **Mounting** A0 : Oval (Ø82.55) *
A1 : Oval (Ø80)
6. **Joining port** FA : Flange *
LA : Screw (G.BSP)
LB : Screw (SAE)
7. **Shaft end** P1 : Plain key *
H4 : Four rectangle spline tooth
S1 : SAE spline
8. **Rotation** R : Right (Clockwise is omitted) *
L : Left (Counterclockwise)
9. **Custom** XXXX

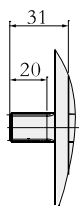
Outline Dimensions



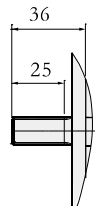
Rectangle spline



SAE spline

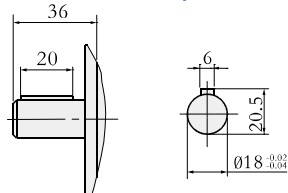


SAE Spline (S1)	
Teeth	9
Module	16/32
Press. Angle	30°
Maj Ø	Ø15.45 ^{+0.15}
Min Ø	Ø12.28



SAE Spline (S2)	
Teeth	10
Module	16/32
Press. Angle	30°
Maj Ø	Ø17.04 ^{+0.15}
Min Ø	Ø13.86

Plain key



Specification

Model	Nominal displacement (mL/r)	Pressure (Mpa)		Speed (r/min)		Volumetric efficiency (≥%)	Flange				Screw		L1	L	Weight (kg)
		Rated	Max	Optimum speed	Speed range		Inlet		Outlet		Inlet	Outlet			
							D	d	D	d					
HGT-F304-****	4	21	25	1500-2500	800-3000	90	40	18	35	14	M22*1.5	M18*1.5	49	100	2.5
HGT-F306-****	6												51	103	2.6
HGT-F308-****	8												52	106	2.7
HGT-F310-****	10												53.5	109	2.8
HGT-F312-****	12					55	112.5	2.9							
HGT-F314-****	14					57	115	3.0							
HGT-F316-****	16					58	118	3.1							
HGT-F318-****	18					59.5	121	3.2							
HGT-F320-****	20					61	124	3.3							
HGT-F322-****	22					63	128	3.4							