

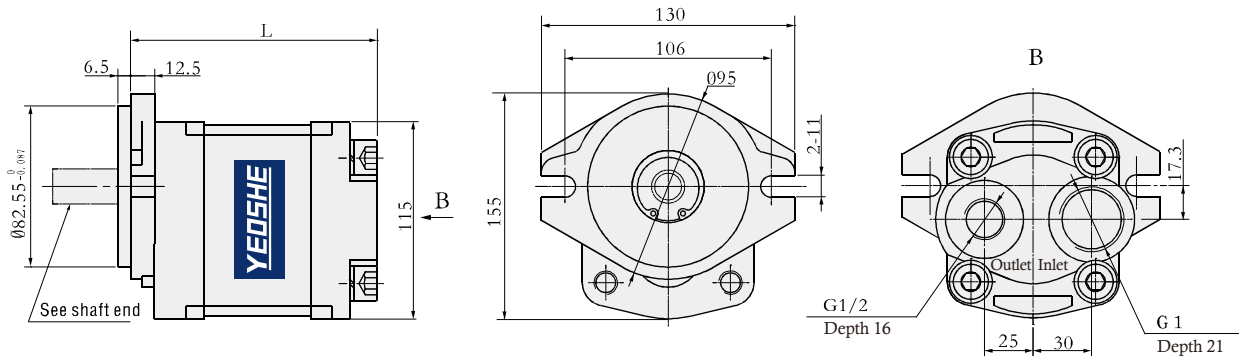


### Model coding

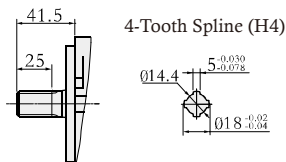


1. **Product code**
2. **Pressure grade** F : 21MPa
3. **Nominal displacement** (mL/r)
4. **Mounting** A1 : Oval
5. **Joining port** LA : Screw (G.BSPP)  
LB : Screw (SAE)
6. **Shaft end** P1 : Plain key \*  
S2 : SAE spline  
H4 : Rectangle spline  
M0 : Involute spline
7. **Rotation** R : Right (Clockwise is omitted) \*  
L : Left (Counterclockwise)
8. **Custom** XXXX

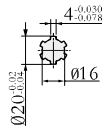
### Outline Dimensions



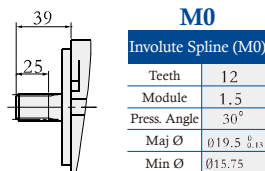
#### Rectangle spline



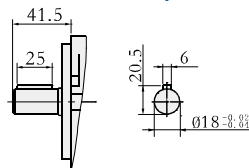
#### 6-Tooth Spline (H6)



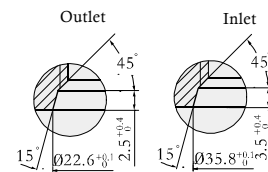
#### Involute spline



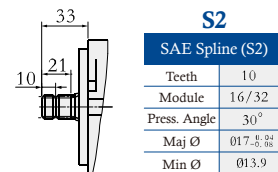
#### Plain key



#### Port sealing dimensions



#### SAE spline



### Specification

Model	Nominal displacement (mL/r)	Pressure(Mpa)		Speed (r/min)		Volumetric efficiency (≥%)	L	Weight (Kg)
		Rated	Instantaneous	Optimum speed	Speed range			
HGE-F23-A1****	23	21	25	1500~2500	800~3000	92	115	4.1
HGE-F25-A1****	25						118	4.3
HGE-F28.2-A1****	28.2						122	4.6
HGE-F30-A1****	30						124	4.8
HGE-F32-A1****	32						126	5.0
HGE-F36-A1****	36						131	5.4