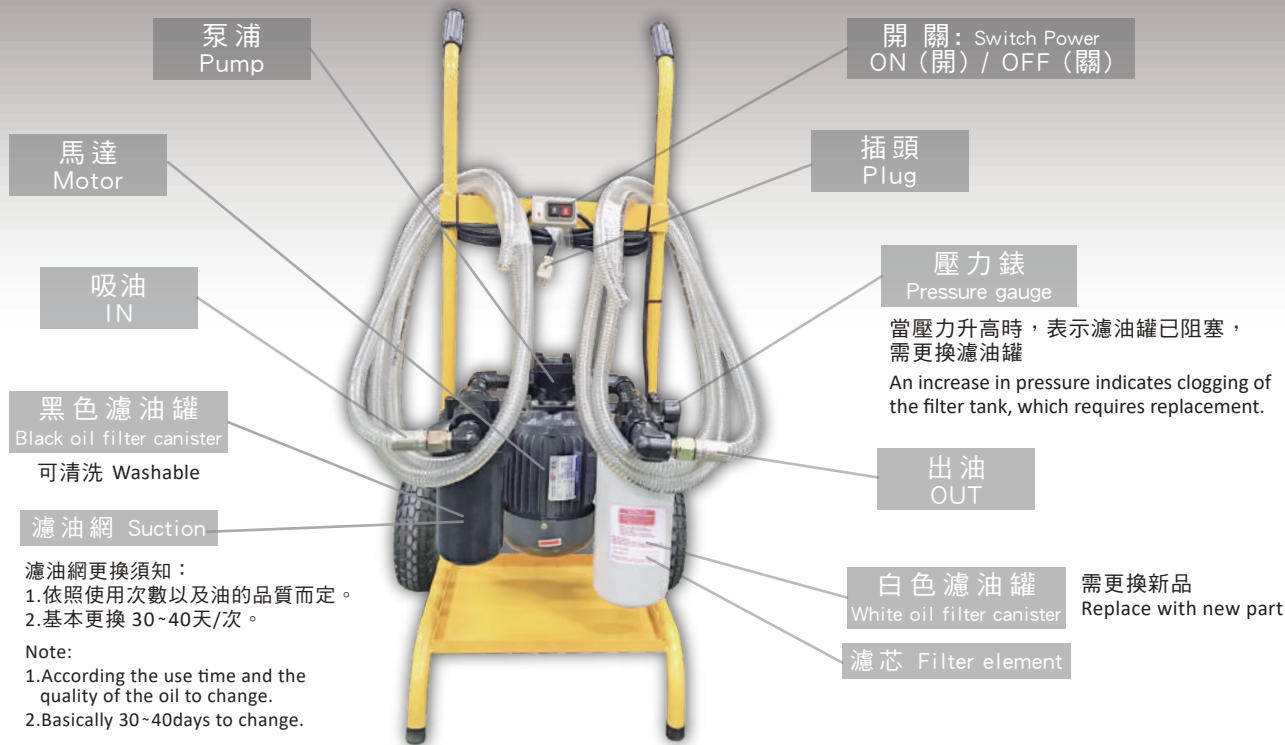


# 高效率濾油車 - FC

## Portable Filter Cart - FC



### 詳細說明 Specification

型號 Model	FC-10	FC-25
標準過濾精度 Mesh	進90微米出油10微米 In 90µm/ Out 10 µm	進90微米出油25微米 In 90µm/ Out 25 µm
流量 Flow(LPM)	20 l/min (1/2 馬達HP) or 40 l/min (1 馬達HP)	
電壓 Voltage	110V / 220V / 380V (單項 / 三項) (Single-phase / Three-phase)	

## 高效率濾油車/FC

### Portable Filter Cart

#### Model / FC

1. 高效率濾油車配有進出油管，無需特殊工具便能進行濾油工作，移動方便，濾網清潔、更新方便容易。

2. 濾油器附有污染指示器。

3. 濾芯取得容易，價位低廉。

4. 推車型設計，搬運容易，不佔空間。

5. 採用大濾網面積，淨化效果佳。
1. With inlet& outlet tube, and easy to process, move and clean without any special tools.

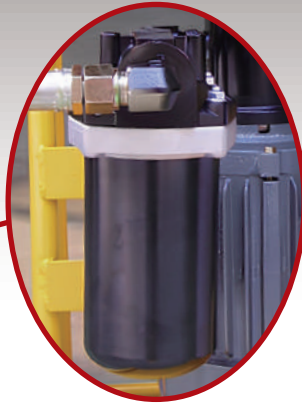
2. Being equipped pollution indicator.

3. Providing sufficient filter elements with low price.

4. Cart-type design,space saving, and easy carrying.

5. Adopting big-capacity filtering net with best purifying effect.

## 吸油濾網(黑色)拆裝說明 Installation and Removal Instructions

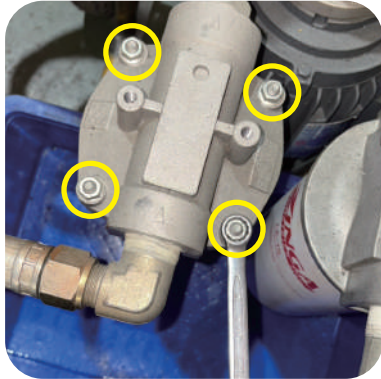


### 拆卸工具 Disassembly tools



### M13板手 M13 wrench

1



鬆開並拆下吸油濾油網座上方的四顆螺母。

Loosen and remove the four nuts located on top of the suction filter housing.

2



請先將O型環擦拭乾淨。

Wipe the O-ring clean before use.

3



再將其放入濾心座內部的油封溝槽中。

Place it into the inner seal groove of the filter base.

4



須將罐內油倒出，並檢查內部是否乾淨，若有髒汙則需再次清潔。

Drain the oil from the tank and inspect the interior. If any contamination is found, clean the tank again.

5



將濾芯拆下後，使用噴槍從內外徹底清潔，再以乾淨油沖洗乾淨後重新安裝。

After removing the filter element, use an air gun to thoroughly clean both the inside and outside surfaces. Then rinse it with clean oil before reinstalling.

6



請確實安裝底部彈簧，壓到底聽見「卡」聲後，即可放回罐內。

Ensure the bottom spring is properly installed. Once you press it down and hear a click, return it to the tank.

## 出油濾網(白色)拆裝說明 Installation and Removal Instructions



### 拆卸工具 Disassembly tools



### 皮帶式鏈管鉗 Belt-type chain wrench

1



將罐體順時針旋轉鬆開後，更換新品。  
Loosen the canister by turning it **clockwise**, then replace it with a new one.

2



使用牛油均勻塗抹油封，並確認其未鬆動或脫落，避免安裝罐體時掉落。  
Apply grease to the oil seal and ensure it is securely in place to prevent it from falling off during canister installation.

3



使用工具將罐子逆時鐘旋緊鎖上即可。  
Simply use a tool to tighten and secure the jar **counterclockwise**.

**YEOSHE**<sup>®</sup>