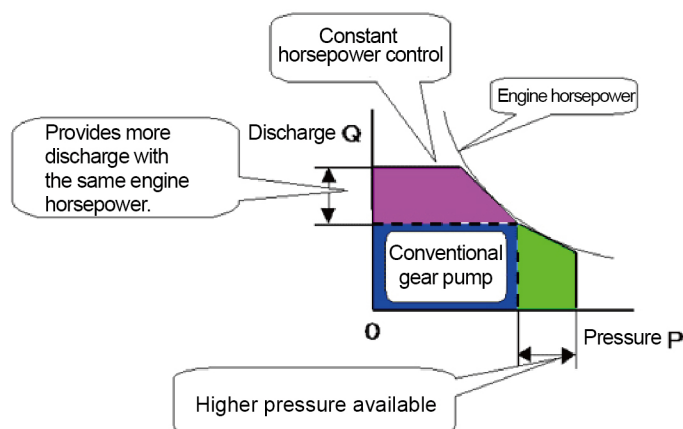
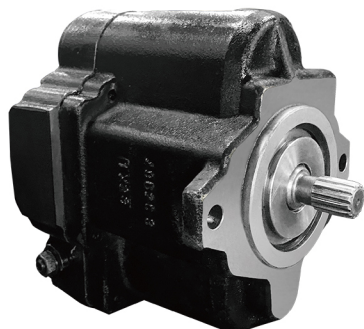


Mini Hydraulic Excavator

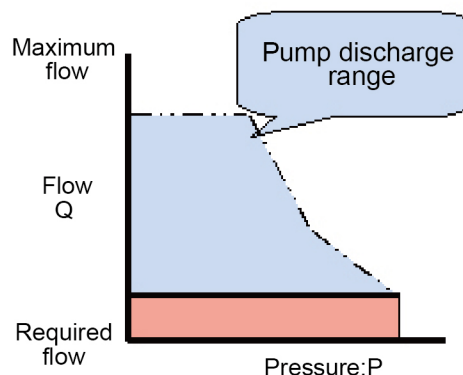
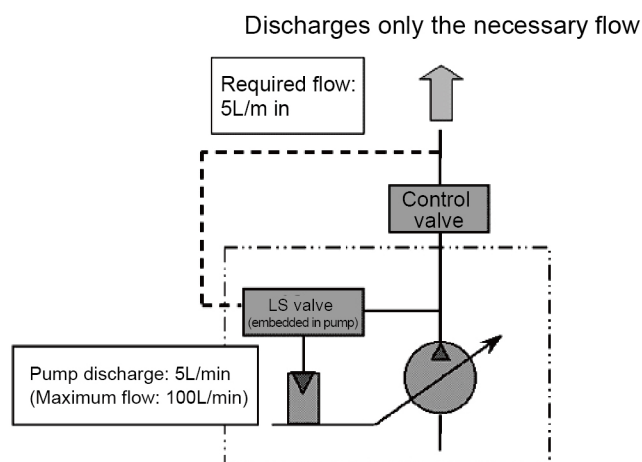
YEOSHE HYDRAULICS TECHNOLOGY CO.,LTD. www.yeoshehydraulic.com

For mini excavators **2~6t** — E-PVK-2B-505-N

Operational Theory



Through load sensing control to reduce energy consumption



Features

- Constant horsepower control with full using of engine horsepower, resulting in increased speed and power of machine.

Specifications

- Various pump sizes available to match from a 1.5-tons to 5 tons small excavator.
- High efficiency gear pump for pilot control valve is standard type, and can be used as a stable hydraulic unit for various kinds of controls for the machine.

Model	Excavator (Ton)	Capacity cm^3/rev	Max. Pressure MPa	Max.RPM min-1	Constant horsepower control	Load sensing control	Pilot control pump
E-PVK-2B	4~5	50	24.5	2600	Standard equipment	Standard equipment	Standard equipment